

Multiply and Divide by 10, 100 and 1000 with a Context Worksheet

Mathematics

Mr Latham and Miss Parsons



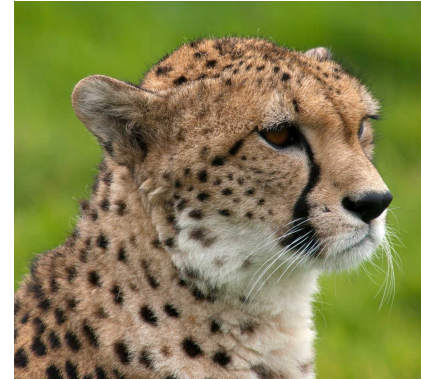
Question 1

Convert the masses below into the desired units.



Body Mass: 60 kg

What is the chimpanzee's body mass in grams?



Body Mass: 45000 grams

What is the cheetah's body mass in kilograms?

$$\begin{array}{c} \div 1000 \\ \curvearrowright \\ 1000 \text{ g} = 1 \text{ kg} \\ \curvearrowleft \\ \times 1000 \end{array}$$



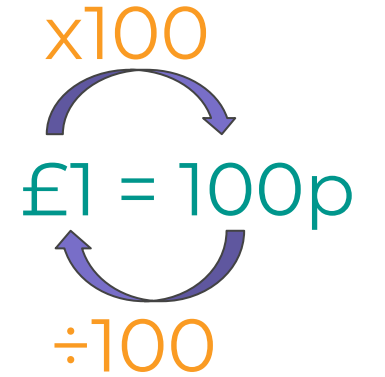
Question 2

Convert the masses below into the desired units.

a) £4.56 = _____ p

b) 672 = £ _____

c) _____ p = £24.67



Question 3

Who spent more money?

I spent £2.75



I spent 280 p



Question 4

Sam buys a stack of paper containing 100 sheets.

Each stack costs £24.90. How much does each sheet of paper cost?

