

# Highest common factor - downloadable resource.

## Lesson 5 of 8.



# Try this

- 1) List the factors of 32 and the factors of 48.
- 2) What factors do they have in common?



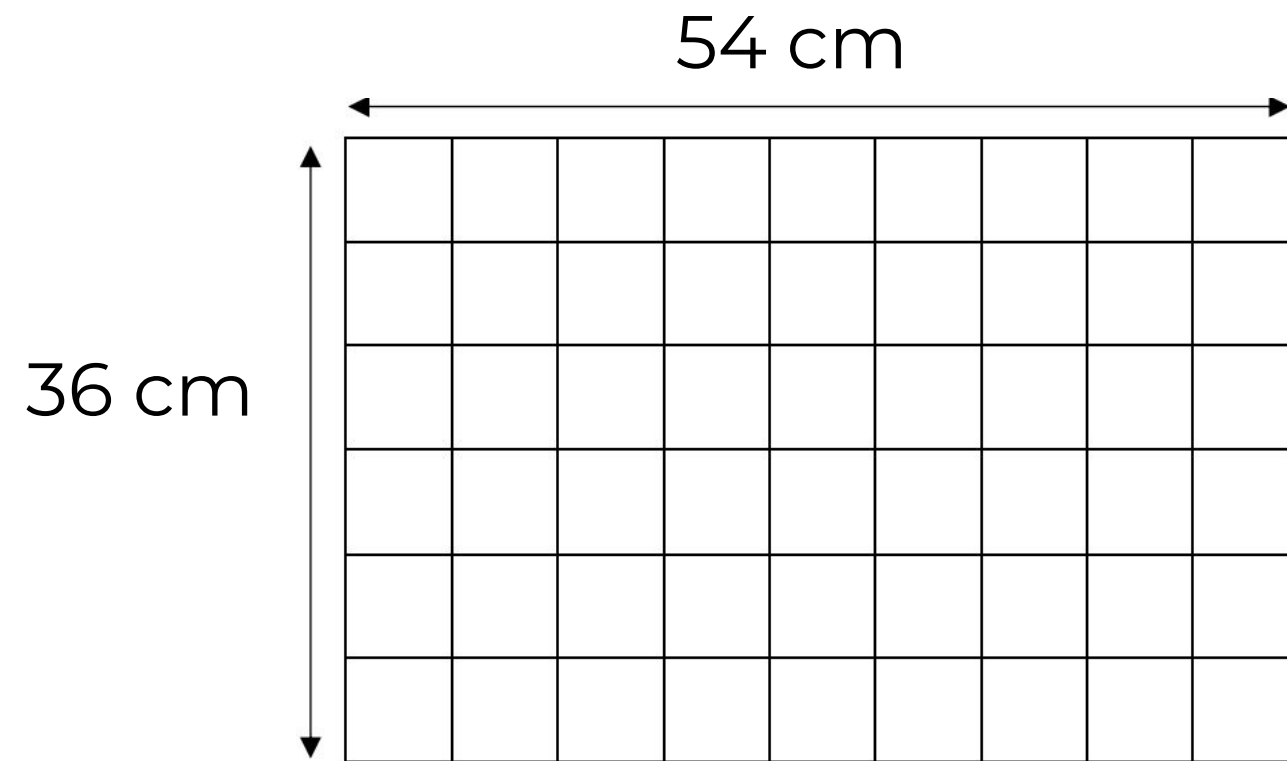
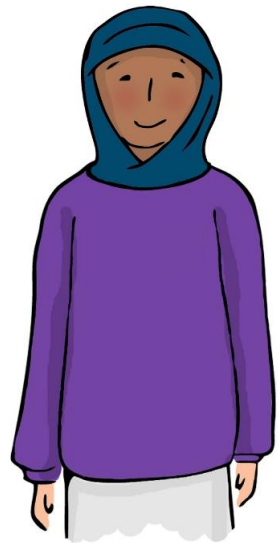
# Independent task

- 1) List all the common factors of 30 and 42.
- 2) What is the HCF of 30 and 42?
- 3) Find a different pair of numbers with the same HCF.
- 4) If the HCF of two numbers is 30 list all the common factors.



# Independent task

- 5) a) What size squares has this student split the rectangle in to?  
b) What other squares size squares can you split it into?



# Explore

Decide if the following are always, sometimes or never true.

If the HCF is 12, then 4 and 3 are common factors.

If 4 and 3 are common factors, then the HCF is 12.

