

# Recognise Nets of 3-D Shapes Worksheet

Mathematics

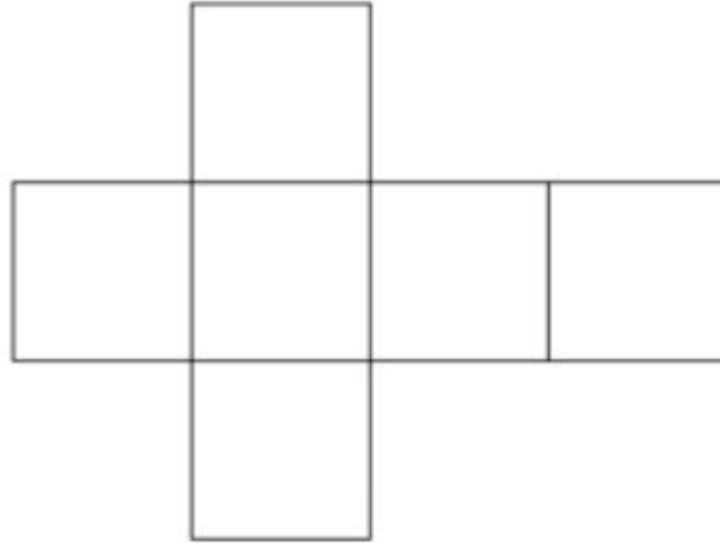
Miss Parsons



## Question 1

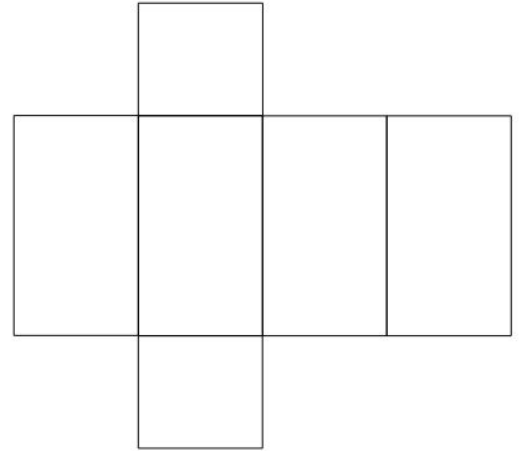
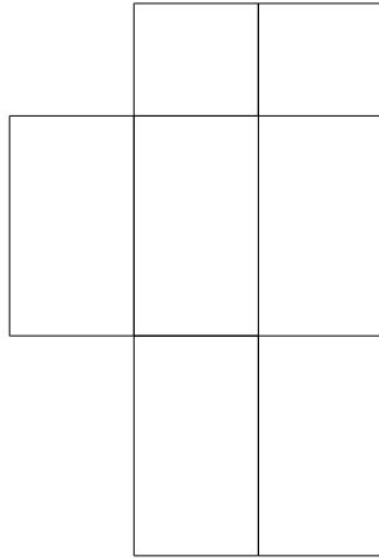
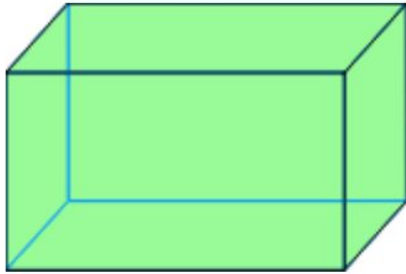
Place spots on each face of the cube net to create a dice.

Opposite faces on a dice sum to seven.



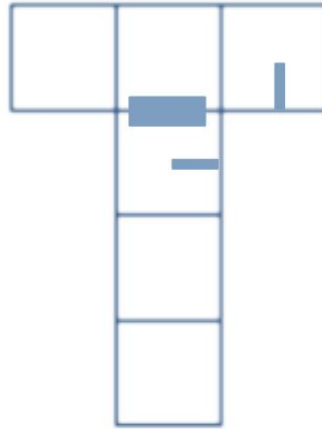
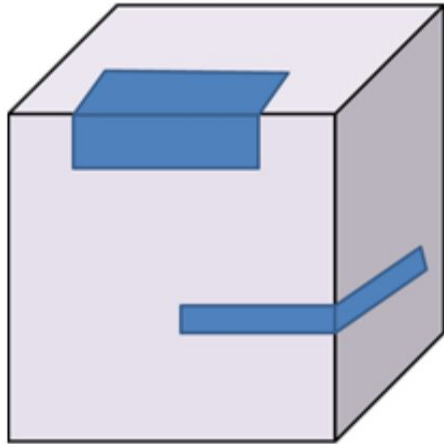
## Question 2

Will these nets make a cuboid?

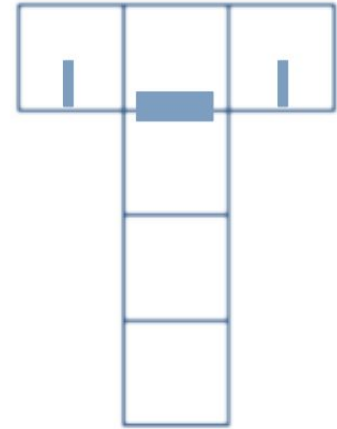


### Question 3

What would the net of this patterned cube look like?

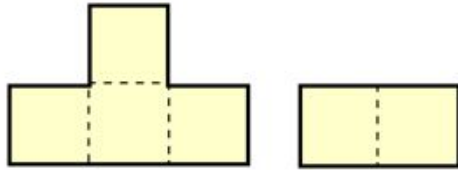


*or*



## Question 4

The net of a cube has been cut into two. It could be put together in several ways so that it could be folded into a cube.



Here are the nets of 9 solid shapes. Each one of these has been cut into 2 pieces, like the net of the cube.

Can you see which pieces go together?

