

Mathematics

# Decimal multipliers

Mr Millar



# Independent task



Write down the calculation required, and the result, when finding...

1. 40% of 70
2. 20% of 17
3. 43% of 725
4. 6% of 500
5. 35.7% of 480
6. 145% of 94

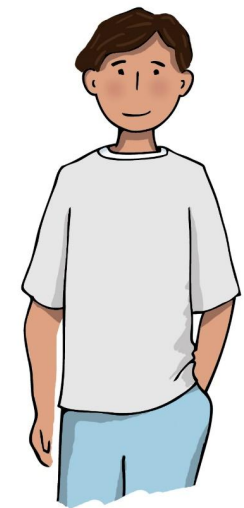


# Explore

How many different ways can you work out 25% of 300?



I can draw 25% of 300 as a bar model and do  $300 \div \text{_____}$ ...



To work out 25% of 300 I start by calculating 10%...

To work out 25% of 300 I use a decimal multiplier...



# Answers



# Independent task



Write down the calculation required, and the result, when finding...

1. 40% of 70       $0.4 \times 70 = 28$
2. 20% of 17       $0.2 \times 17 = 3.4$
3. 43% of 725       $0.43 \times 725 = 311.75$
4. 6% of 500       $0.06 \times 500 = 30$
5. 35.7% of 480       $0.357 \times 480 = 171.36$
6. 145% of 94       $1.45 \times 94 = 136.3$

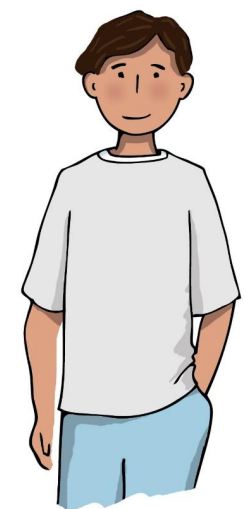
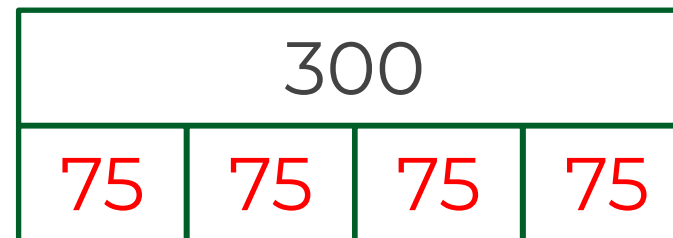


# Explore

How many different ways can you work out 25% of 300?



I can draw 25% of 300 as a bar model and do  $300 \div 4 \dots$



To work out 25% of 300 I start by calculating 10%...

$$10\% = 30$$

$$20\% = 60$$

$$5\% = 15$$

$$25\% = 75$$

To work out 25% of 300 I use a decimal multiplier...

$$0.25 \times 300 = 75$$

