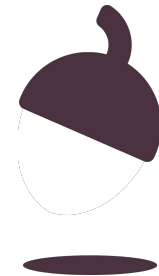


French

Talking about volunteering [1 / 3]

- Using emphatic pronouns

Madame Williams



OAK
NATIONAL
ACADEMY

Liaison

[SFC]

dan**s**



Shhhhh!



les**s** amis



Liaison



les **a** amis



deux **x** amis





Liaison: the final sound of one word is carried over to the start of the next. This normally happens when a silent consonant is followed by a vowel.



faire du bénévolat	To volunteer
travailler	To work
aider	To help
donner de confiance	To give confidence
développer de nouvelles compétences	To develop new skills
participer à la vie en société	To participate in society
rencontrer de nouvelles personnes	To meet new people
les sans-abri / les SDF	homeless people
les enfants	children
enrichissant	enriching



The infinitive can also be translated by the gerund.

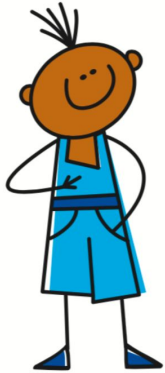
Travailler =
to work AND
working



Emphatic pronouns



Pour **moi**



For me

Chez **moi**

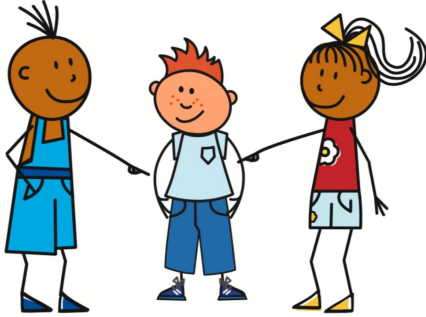


the house of me = my house



Emphatic pronouns

Pour **lui**



For him

Chez **lui**



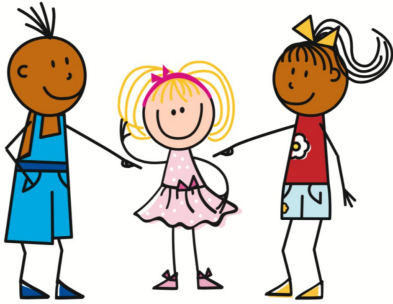
the house of him = his house



Emphatic pronouns



Pour **elle**



For her

Chez **elle**



the house of her = her
house



Emphatic pronouns



Pour **eux**



For them

Chez **eux**



At the house of them = their house



Protecting the Environment

1. The pronoun 'on' can mean ...	You / We
2. I should / You should =	je devrais/on devrait
3. I could / I could =	je pourrais/on pourrait
4. The second verb in a clause in a sentence must be in the ...	infinitive
5. Infinitive can have two translations. What are they?	To + action, action+ing

